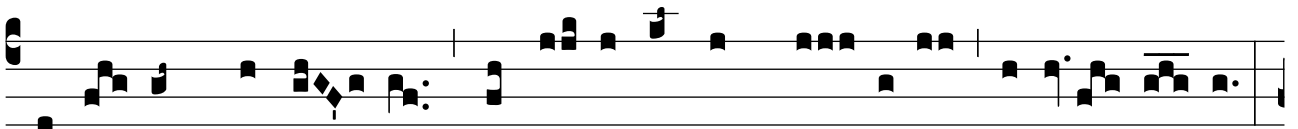


DOMINICA PENTECOSTES

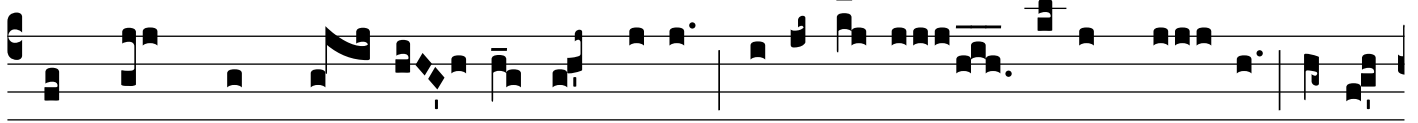
Sap 1: 7

INTR.  
VIII

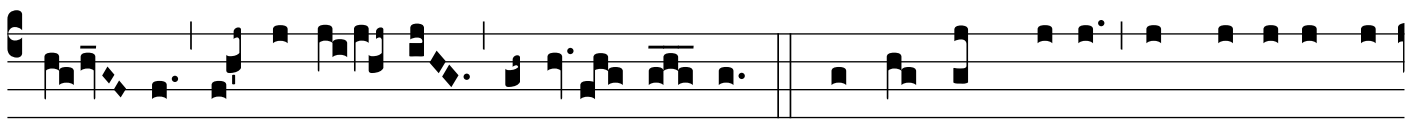
**S**



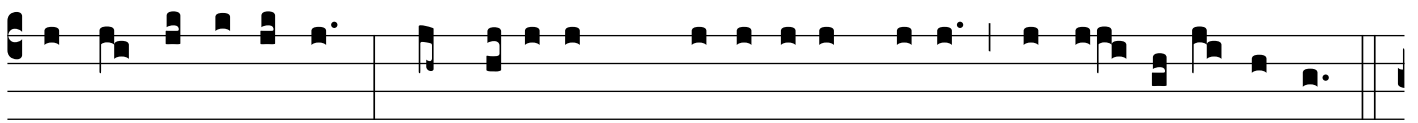
Pí-ri- tus Dómi- ni \* replé- vit orbem ter- rárum, alle- lú- ia:



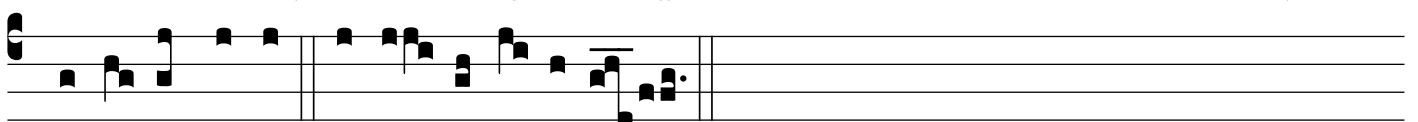
et hoc quod cón- ti- net ómni- a, sci- énti- am habet vo- cis, alle-



lú- ia, al- le- lú- ia, alle- lú- ia. Ps. Exsúrgat De- us, et dissipéntur



in- i- mí- ci e- jus: \* et fúgi- ant, qui odérunt e- um, a fá- ci- e e- jus.

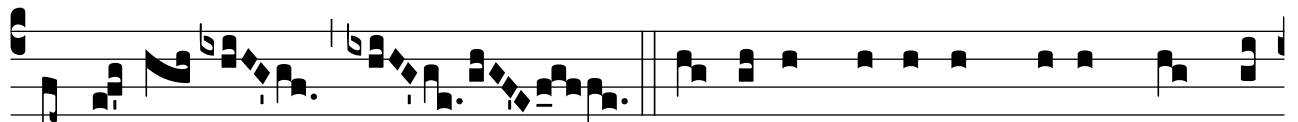


Gló- ri- a Patri. E u o u a e.

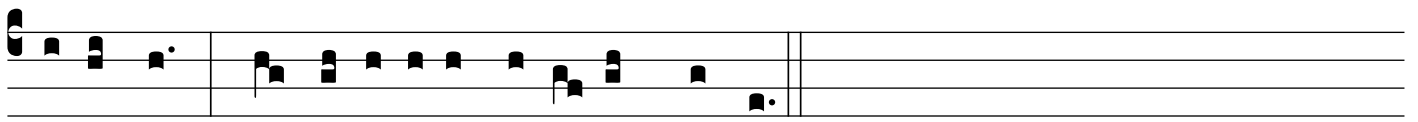
Ps 103: 30

IV

**A**



L- le- lú- ia. \* ij.                      ꝥ. Emítte Spí- ri- tum tu- um, et cre-

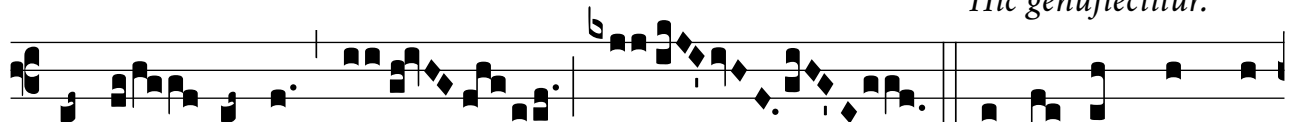


abúntur: \* et renovábis fá- ci- em terræ.

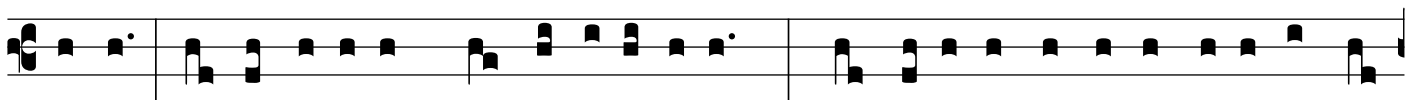
*Hic genuflectitur.*

II

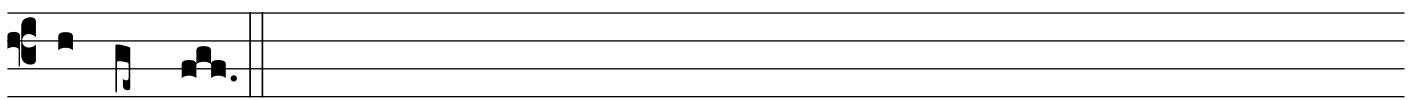
**A**



L- le- lú- ia. \*                                      ꝥ. Ve- ni Sancte Spí-



ri- tus, reple tu- órum corda fidé- li- um: \* et tu- i amó- ris in e- is ignem



accénde.

SEQ.

I

V

Eni Sancte Spí-ri-tus, Et emít-te cæ- li-tus Lu- cis tu-æ rá- di-

um. 2. Veni pa-ter páuperum, Veni da-tor mú- nerum, Veni lumen cór-

di-um. 3. Conso-lá-tor óptime, Dulcis hospes á-nimæ, Dulce refri-gé- ri-

um. 4. In labóre réqui-es, In æstu tempé-ri-es, In fle-tu so-lá- ti-um.

5. O lux be- a-tís-sima, Reple cordis íntima Tu- órum fidé- li-um. 6. Si-

ne tu- o númine, Ni-hil est in hómine, Ni-hil est innó- xi-um. 7. Lava

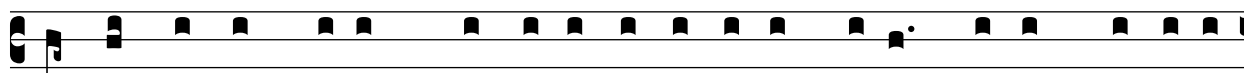
quod est sórdidum, Ri-ga quod est á-ridum, Sana quod est sáuci-um.

8. Flecte quod est rí-gidum, Fove quod est frí-gidum, Rege quod est dé-vi-

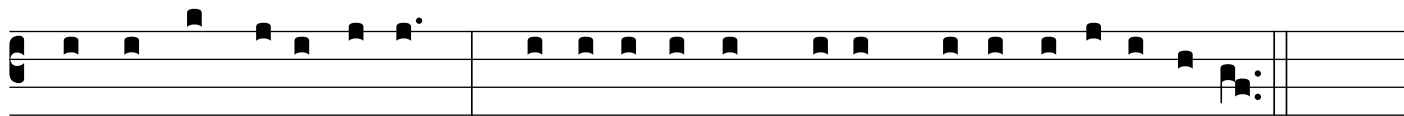
um. 9. Da tu-is fidé-libus, In te confidéntibus, Sacrum septená-ri-um.

10. Da virtú-tis mé-ri-tum, Da sa-lú-tis éx-i-tum, Da per-énne gáudi-um.

A-men. Alle-lú-ia.

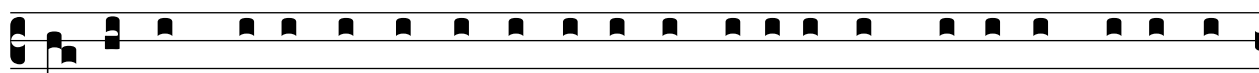
OFFERT.  
VII**C**

Onfírma hoc De-us, quod ope-rá-tus es in nobis: † a templo tu-o,

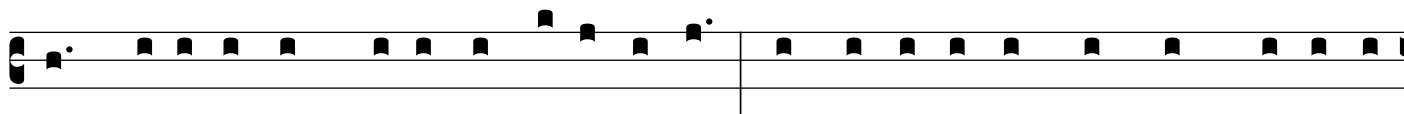


quod est in Jerú-sa-lem, \* ti-bi óffe-rent reges múne-ra, alle-lú-ia.

Act 2: 2, 4

COMM.  
VII**F**

Actus est repén-te de cæ-lo sonus adveni-éntis spí-ri-tus vehemén-



tis, † ubi e-rant sedéntes, alle-lú-ia: \* et replé-ti sunt omnes Spí-ri-tu



Sancto, loquéntes magná-li-a De-i, alle-lú-ia, alle-lú-ia.