

THE EPIPHANY OF OUR LORD.

Double of I Class with Octave.

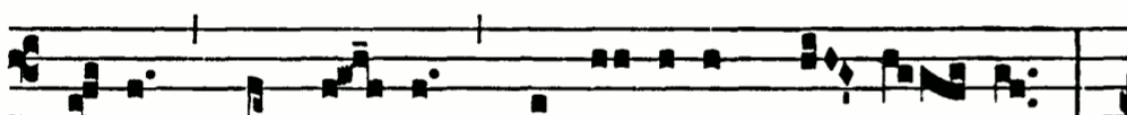
AT FIRST VESPERS.

AT MASS.

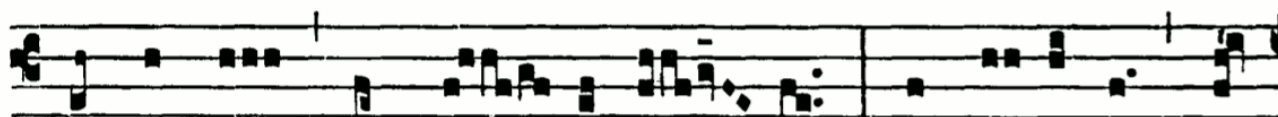
Intr.

2.

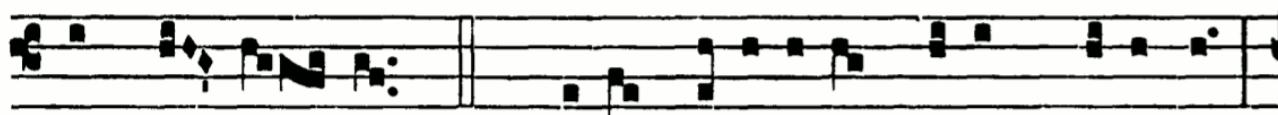
E



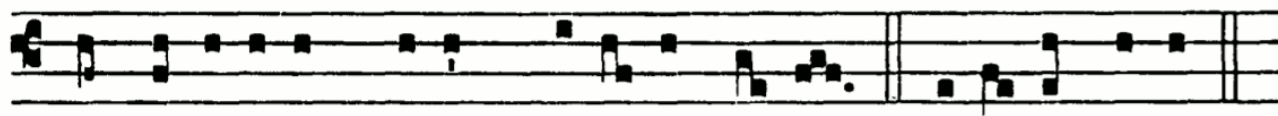
C-ce * advé- nit domi- nátor Dó- mi- nus :



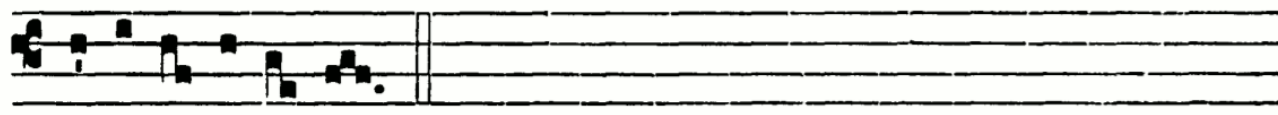
et régnum in má- nu é- jus, et pot- éstas, et



impé- ri- um. *Ps.* Dé- us, judí- ci- um tú- um Régi da : *



et justí- ti- am tú- am Fí- li- o Ré- gis. Gló- ri- a Pátri.



E u o u a e.