

# CRUX FIDÉLIS

*passion*

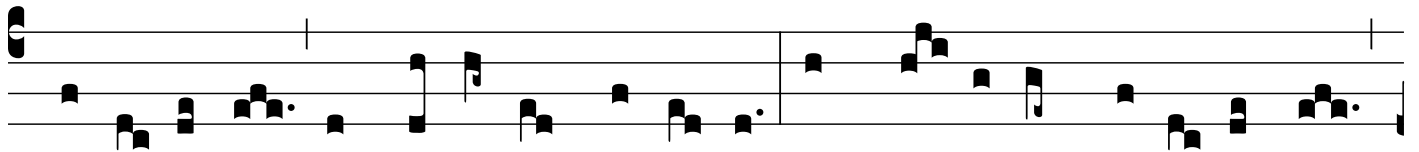
I  
**C** Rux fidé-lis, inter omnes Arbor u-na nó-bi-lis: Nulla silva  
 ta-lem pro-fert, Fronde, flo-re, gé-rmi-ne: \* *Dulce lignum*, dulces  
 clavos, Dulce pondus sústi-net.

HYMN.  
 I  
**P** Ange, lingua, glo-ri-ó-si Láure-am certámi-nis, Et su-per  
 Cru-cis trophæ-o Dic tri-úm-phum nó-bi-lem: Quá-li-ter Red-émp-  
 tor orbis Immo-lá-tus ví-ce-rit. \* *Crux fidelis...*

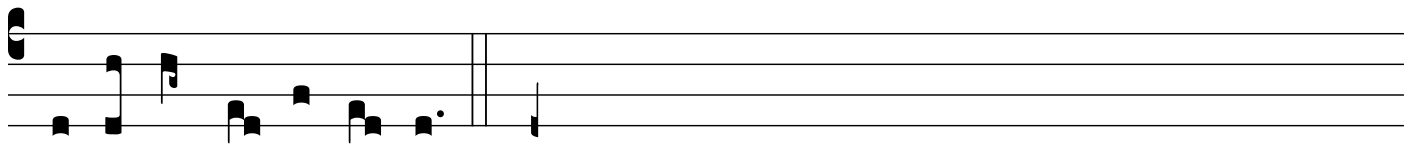
Ÿ. 2. De pa-réntis pro-toplás-ti Fraude Factor cóndo-lens, Quando  
 pomi no-xi-á-lis In necem morsu ru-it: Ipse lignum tunc no-  
 tá-vit, Damna ligni ut sólve-ret. \* *Dulce...*



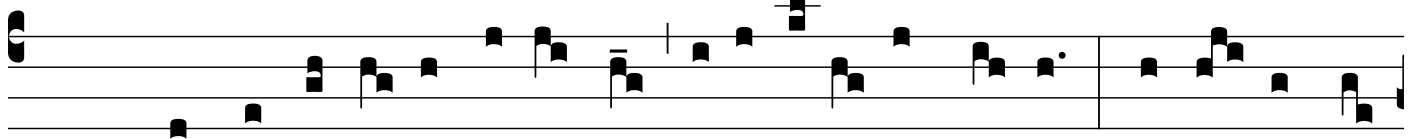
ŷ. 3. Hoc opus nostræ sa-lú-tis Ordo de-popósce-rat: Multi- fórmis



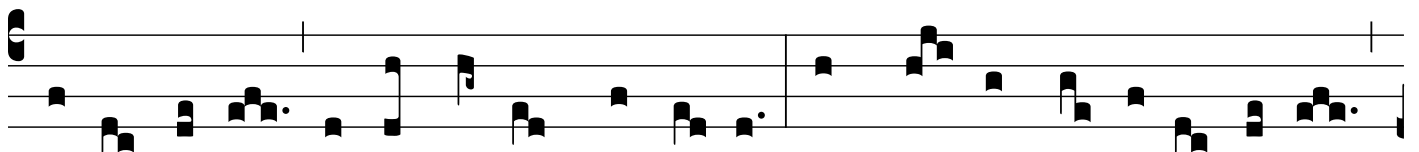
pro-di-tó-ris Ars ut artem fál-le-ret: Et me-dé-lam ferret inde,



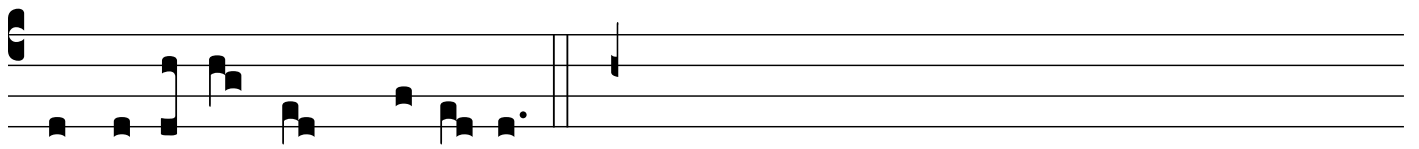
Hostis unde læ-se-rat. \* *Crux fidélis...*



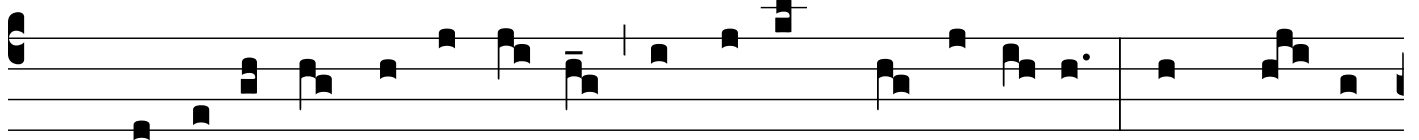
ŷ. 4. Quando ve-nit ergo sa-cri Pleni-túdo témpo-ris, Missus est ab



arce Patris Na-tus, orbis Cóndi-tor, Atque ventre virgi-ná-li



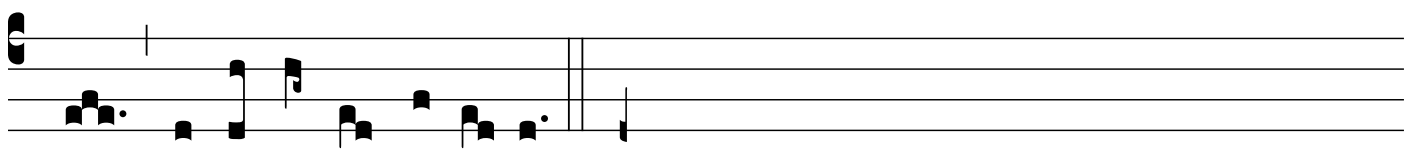
Carne amíc-tus pródi- it. \* *Dulce...*



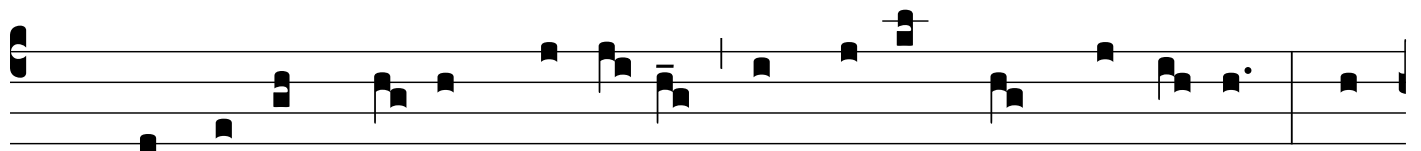
ŷ. 5. Va-git infans inter arcta Cóndi-tus præ-sé-pi- a: Membra pan-



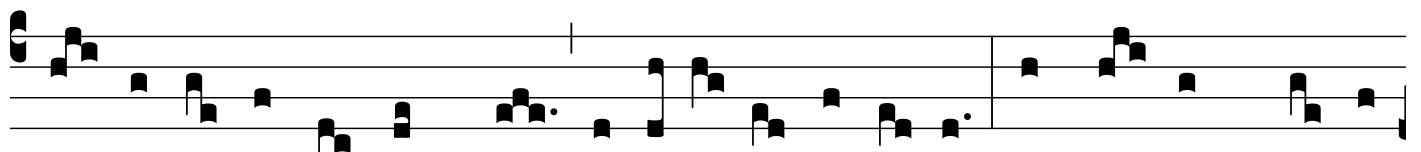
nis invo-lú-ta Virgo Ma-ter ál-li-gat: Et De- i manus pe-dés-



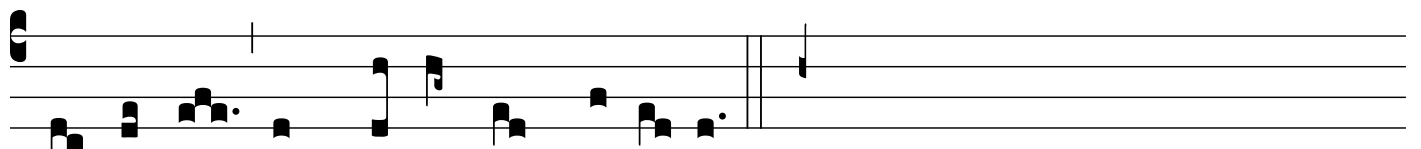
que Stricta cingit fásci- a. \* *Crux fidélis...*



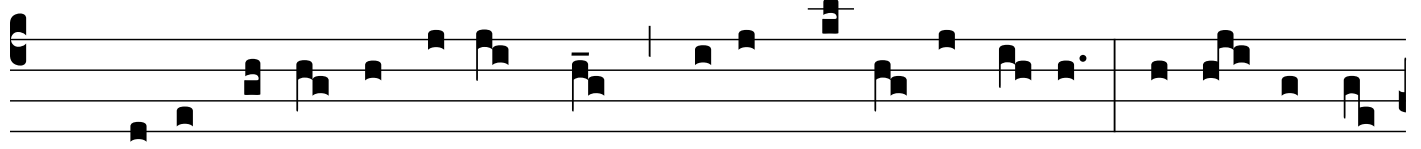
ŷ. 6. Lustra sex qui jam per-é- git, Tempus implens córpo-ris, Spon-



te lí-be-ra Red-émptor Passi-ó-ni dé-di-tus, Agnus in Cru-cis



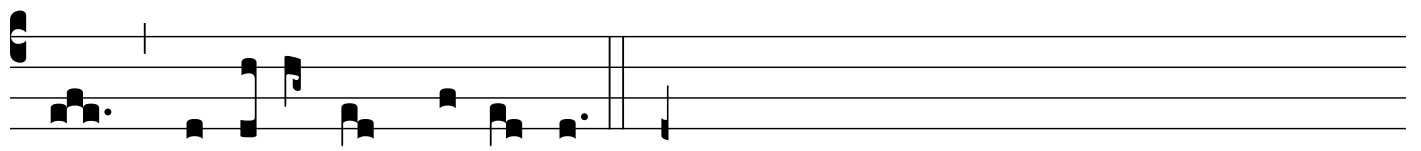
le-vá-tur Immo-lándus stí-pi-te. \* *Dulce...*



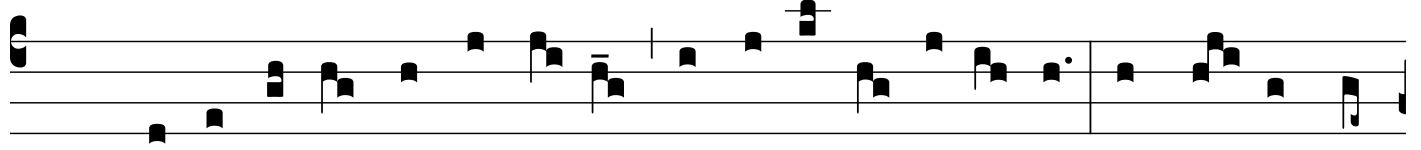
ŷ. 7. Felle po-tus ecce languet: Spina, cla-vi lánce-a, Mi-te corpus



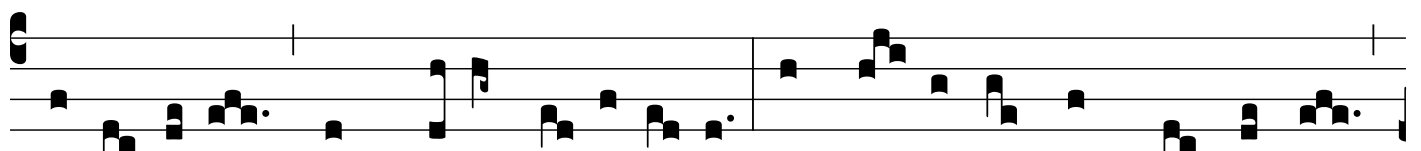
perfo-rárunt, Unda ma-nat et cru-or: Terra, pontus, astra, mun-



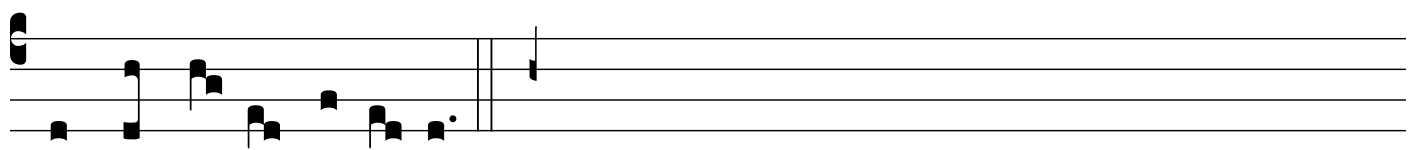
du-s, Quo lavántur flúmi-ne! \* *Cru-x fidé-lis...*



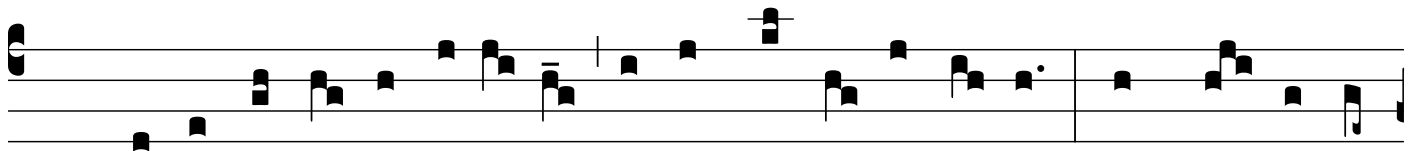
ŷ. 8. Flecte ramos, arbor al-ta, Tensa la-xa vísce-ra, Et ri-gor len-



téscat ille, Quem dedit na-tí-vi-tas: Et su-pérni membra Re-gis



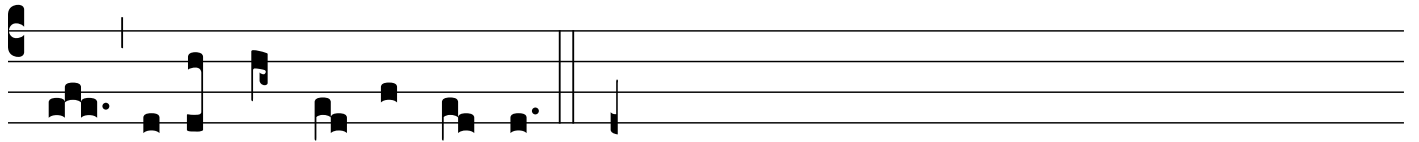
Tende mi-ti stí-pi-te. \* *Dulce...*



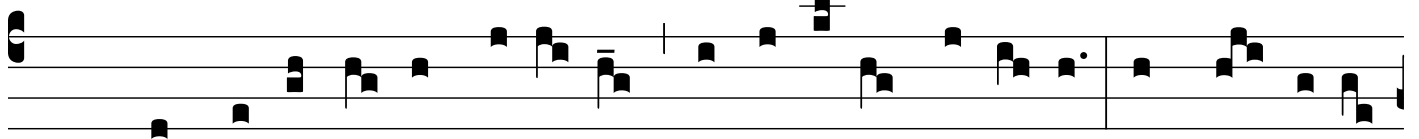
ŷ. 9. So-la digna tu fu-ís-ti Ferre mundi víc-timam: Atque portum



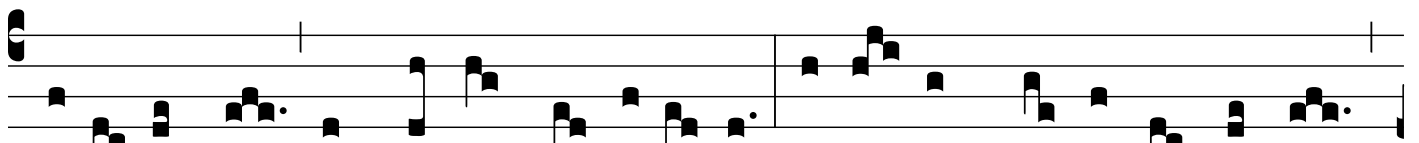
præpa-rá-re Arca mundo náufra-go: Quam sa-cer cru-or per-ún-



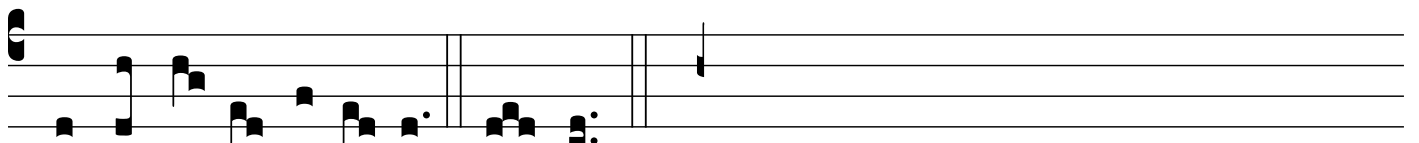
xit, Fusus Agni córpo-re. \* *CruX fidélis...*



ŷ. 10. Sempí-térna sit be-á-tæ Tri-ni-tá-ti gló-ri- a: Æqua Patri



Fi-li-óque; Par de-cus Pa-rácli-to: Uní- us Tri-níque nomen



Laudet u-ni-vérsi-tas. A-men. \* *Dulce...*