

DOMINICA III IN QUADRAGESIMA

Ps 24: 15-16, 1-2

INTR.  
VII

**O**

-cu-li me-i \* sem- per ad Dó-mi-num, qui-a ipse evél-

let de lá-que-o pedes me- os: réspi- ce in me, et mi-se-ré-

re me- i, quóni- am úni- cus et pau- per sum e- go.

Ps. Ad te Dómine levá-vi ánimam me-am: \* De-us me-us, in te confído,

non erubés- cam. Gló- ri-a Patri. E u o u a e.

Ps 9: 20, 4

GRAD.  
VIII

**E**

X-súrge Dómine, non præ-vá-le-at homo: \* judi-céntur gentes in

conspéctu tu-o. 2. In converténdo in-imí-cum me-um retrórsum, \* infir-

mabúntur, et per-íbunt a fá-ci-e tu-a.

Ps 122: 1-3

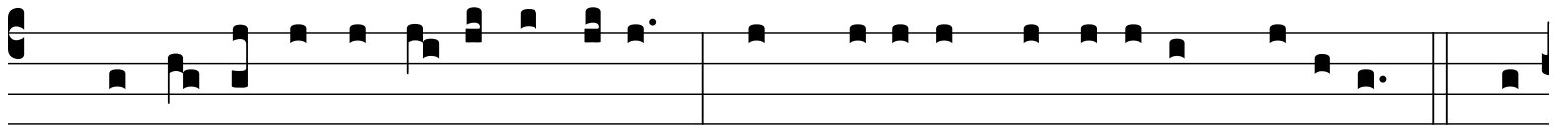
TRACT.  
VIII

**A**

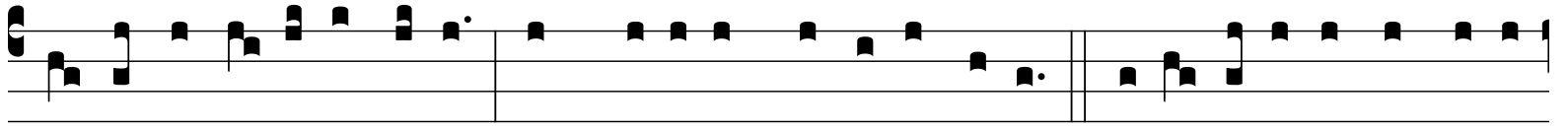
D te le- vá- vi \* ó- cu- los me- os, qui

há- bi- tas in cæ-

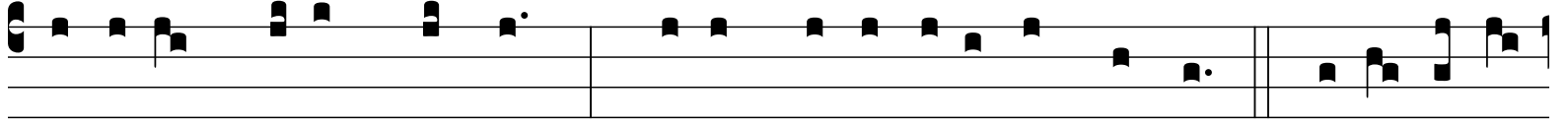
lis.



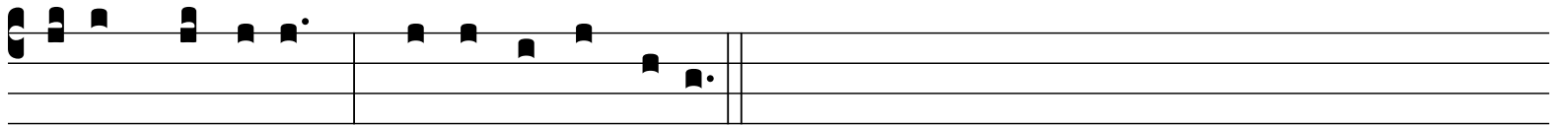
ꝥ. 2. Ecce sic-ut ó-cu-li servórum \* in mánibus dominórum su-órum: 3. Et



sic-ut ó-cu-li ancíllæ \* in mánibus dómínæ su-æ: 4. I-ta ócu-li nostri ad



Dóminum De-um nostrum, \* donec mi-se-re-á-tur nostri. 5. Mi-se-ré-re

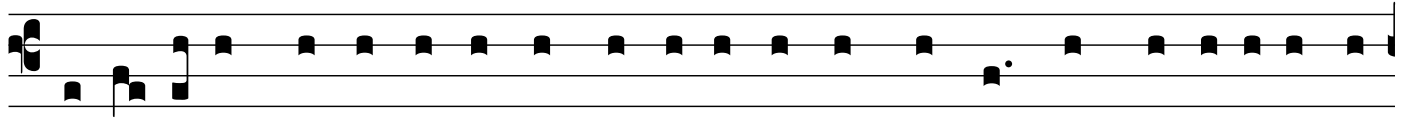


nobis Dómine, \* mi-se-ré-re nobis.

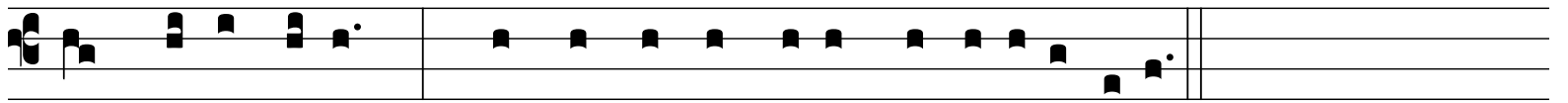
*Ps 18: 9, 10, 11, 12*

OFFERT.  
II

**J**



Ustí-ti-æ Dómi-ni rectæ, læ-ti-fi-cántes corda, † et dulci-óra su-

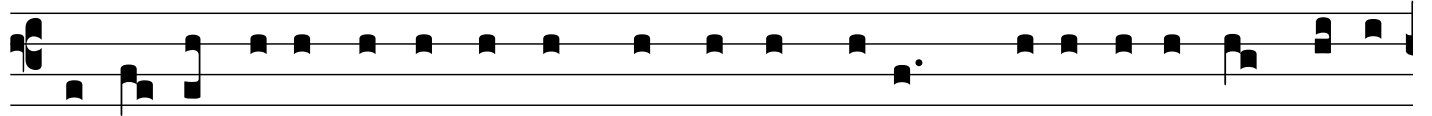


per mel et favum: \* nam et servus tu-us custódi-et e-a.

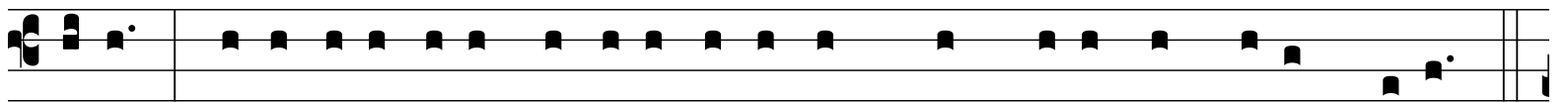
*Ps 83: 4-5*

COMM.  
II

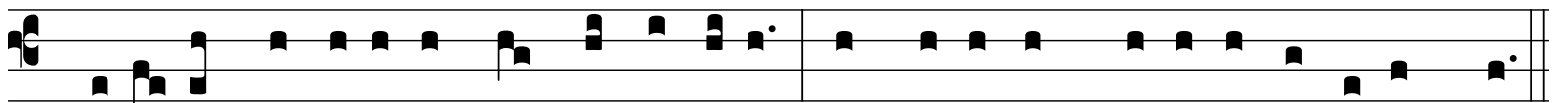
**P**



Asser invénit si-bi domum, et turtur nidum, † ubi repó-nat pullos



su-os: \* altá-ri-a tu-a Dómine virtú-tum, Rex me-us, et De-us me-us:



2. Be-á-ti qui hábi-tant in domo tu-a, \* in sǣcu-lum sǣcu-li laudábunt te.