

ST JOSEPH

Ps 91: 13-14, 2

INTR.

J Us- tus * ut palma flo- ré- bit: sic-ut cedrus Lí-
 bani multipli- cá- bi- tur: plantá- tus in domo Dómi- ni,
 in á- tri- is domus De- i nos- tri. *T. P.* Al- le- lú- ia, alle-
 lú- ia. *Ps.* Bonum est confi- té- ri Dómi- no * et psálle- re nómi- ni tu- o,
 Altíssi- me. Gló- ri- a Patri. E u o u a e.

Ps 20: 4-5

GRAD.
VIII

D Omi- ne, prævenísti e- um † in benedicti- ó- ni- bus dulcédi-
 nis: * posu- ísti in cápi- te e- jus corónam de lápide pre- ti- óso.
 2. Vi- tam pé- ti- it, et tri- bu- ísti e- i * longi- túdinem di- é- rum in sæ-
 cu- lum sácu- li.

Ps 111: 1-3

TRACT.
VIII

B

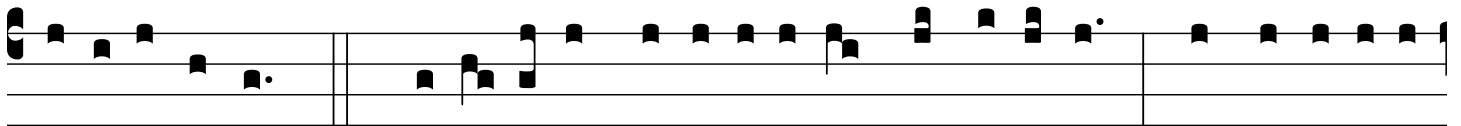
E-á- tus vir, * qui timet Dó- minum:



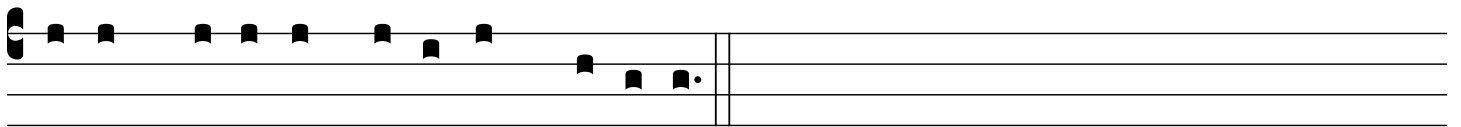
in man-dá- tis e- jus cu- pit ni-



mis. *ψ.* 2. 2. Pot-ens in terra e-rit semen e-jus: * gene-rá-ti-o rectórum



benedi-cé-tur. 3. Gló-ri- a et di-ví-ti-æ in domo e-jus: * et justí-ti- a



e-jus manet in sá-cu-lum sá-cu-li.

Ps 88: 25

OFFERT.
II

V

E-ri-tas me-a, et mi-se-ri-córdi- a me- a cum ipso: * et in



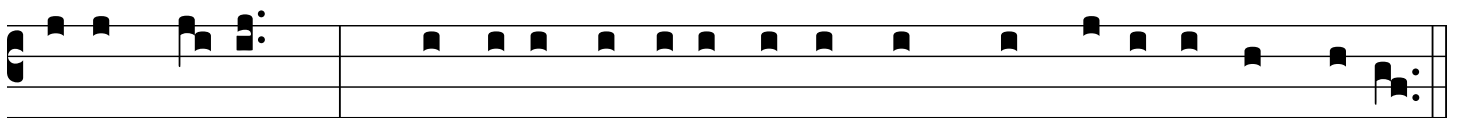
nómine me-o ex-altá-bi-tur cornu e-jus.

Matth 1: 20

COMM.
VII

J

O- seph fi-li Da-vid, † no-li timé-re accí-pe-re Ma-rí- am cón-



jugem tu- am: * quod enim in e- a na- tum est, de Spí-ri-tu Sancto est.